

# QUADRIFOGLIO TAVOLINO

Design C. Ballabio

TAVOLINO | COFFEE TABLE

2019



# QUADRIFOGLIO TAVOLINO

Design C. Ballabio

TAVOLINO | COFFEE TABLE

2019

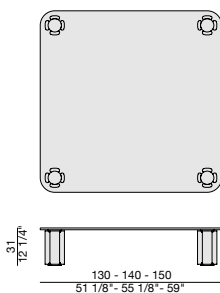
Tavolino quadrato con quattro gambe in massello di noce canaletta o frassino posizionate sui quattro angoli. Piano in cristallo trasparente (spessore mm. 15). Piastre e piedini in ottone spazzolato.

*Square coffee table with four solid canaletta walnut or ash legs placed on the corners. Clear glass top (thickness mm. 15). Brushed brass plates and feet.*

*Quadratischer Couchtisch mit vier massiven Nussbaum- oder Eschenbeinen aus Canaletta, die an den Ecken platziert sind. Klarglasplatte (Stärke 15mm). Platten und Füße aus gebürstetem Messing.*

*Table basse carrée avec quatre jambes en frêne massif placées sur les quatre angles. Plateau en verre transparent (épaisseur mm. 15). Plaques et pieds en cuivre brossé.*

*Mesa de centro cuadrada con cuatro patas de fresno macizo en las esquinas. Tapa de cristal transparente (espesor mm. 15). Placas y pies de latón cepillado.*



# QUADRIFOGLIO TAVOLINO

Design C. Ballabio

TAVOLINO | COFFEE TABLE

2019

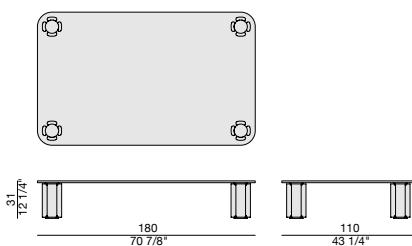
Tavolino rettangolare con quattro gambe in massello di noce canaletta o frassino posizionate sui quattro angoli. Piano in cristallo trasparente (spessore mm. 15). Piastre e piedini in ottone spazzolato.

*Rectangular coffee table with four solid canaletta walnut or ash legs placed on the corners. Clear glass top (thickness mm. 15). Brushed brass plates and feet.*

*Rechteckiger Couchtisch mit vier massiven Nussbaum- oder Eschenbeinen aus Canaletta, die an den Ecken platziert sind. Klarglasplatte (Stärke 15mm) Platten und Füße aus gebürstetem Messing.*

*Table basse rectangulaire avec quatre jambes en frêne massif placées sur les quatre angles. Plateau en verre transparent (épaisseur mm. 15). Plaques et pieds en cuivre brossé.*

*Mesa de centro rectangular con cuatro patas de fresno macizo en las esquinas. Tapa de cristal transparente (espesor mm. 15). Placas y pies de latón cepillado.*



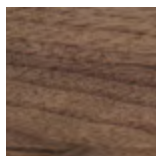
# QUADRIFOGLIO TAVOLINO

Design C. Ballabio

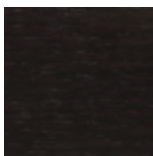
TAVOLINO | COFFEE TABLE

2019

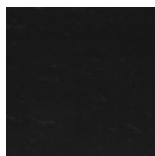
## Essenze | Wood



Noce canaletta  
Canaletta walnut

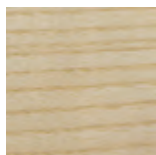


Noce canaletta  
tinto moka  
Canaletta walnut  
moka stained



Noce canaletta  
tinto wengè  
Canaletta walnut  
wengè stained

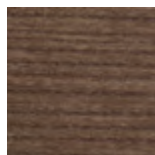
## Essenze | Wood



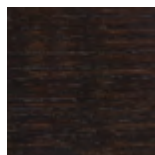
Frassino naturale  
Natural ash



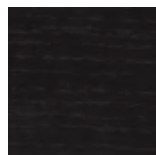
Frassino  
tinto canapa  
Ash canapa stained



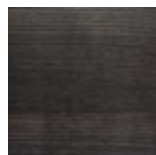
Frassino  
tinto noce canaletta  
Ash canaletta walnut  
stained



Frassino  
tinto moka  
Ash moka stained

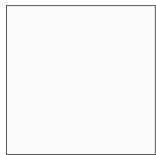


Frassino  
tinto wengè  
Ash wengè stained

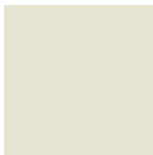


Frassino  
tinto grigio  
Ash grey stained

## Laccato opaco poro chiuso | Matt Lacquered closed pore



Bianco  
White  
(RAL 9016)



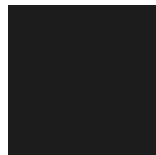
Avorio  
Ivory  
(RAL 1013)



Argilla  
Argilla  
(RAL 7006)



Cioccolato  
Chocolate  
(RAL 8019)



Nero  
Black  
(RAL 9005)

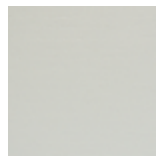


Iron  
Iron  
(RAL 7011)



Granata  
Granata  
(NCS S4050Y90R)

## Laccato opaco poro aperto | Matt Lacquered open pore



Bianco  
White  
(RAL 9016)



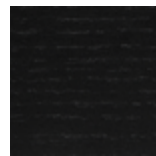
Avorio  
Ivory  
(RAL 1013)



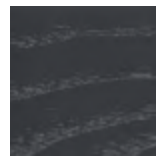
Argilla  
Argilla  
(RAL 7006)



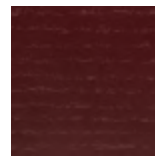
Cioccolato  
Chocolate  
(RAL 8019)



Nero  
Black  
(RAL 9005)



Iron  
Iron  
(RAL 7011)



Granata  
Granata  
(NCS S4050Y90R)

# QUADRIFOGLIO TAVOLINO

Design C. Ballabio

TAVOLINO | COFFEE TABLE

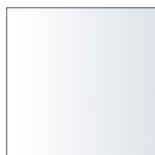
2019

## Metallo | Metal



Ottone spazzolato  
Brushed brass

## Cristallo | Glass



Trasparente  
Transparent